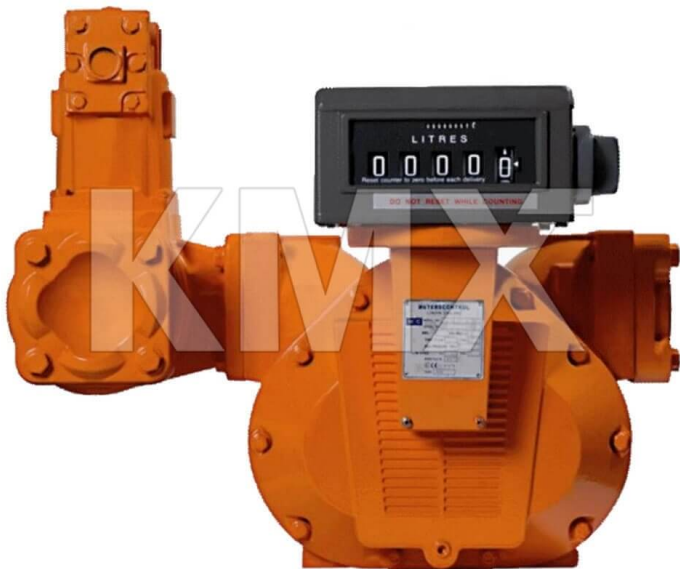


POSITIVE DISPLACEMENT FUEL FLOW METER 4" HIGH CAPACITY



* Referential image

** Some features may vary without prior notice. Sale subject to inventory availability

DATE

: 04/22/2026 11:48 AM

SKU

: 27825

BRAND

: Meters Control

MODEL

: MC530HC

MetersControl Positive Displacement Flow Meter are designed and engineered in Europe and pass through rigorous tests that ensure accuracy, repeatability and long life. MC offers the ideal solution in a variety of applications, in which transfer of petroleum products is implicated and high accuracy is required.

TYPICAL APPLICATIONS: Check of loading / unloading operations of fuel and petrochemical products in fuel bulk plants and/or refineries. On truck tanker for fuel transport and delivery. Heavy duty fuel dispensing system for big vehicles and airplanes.

HIGHLIGHTS:

- Absolute compatibility with all Veeder Root components
- Lack of internal friction (No metal-to-metal contact)
- Reduced number of parts
- Self-lubricating
- Low and easy maintenance
- Low drop pressure between parts
- Simple and robust design
- Bi-directional liquid flow
- Meets Worldwide Weights and Measures Standards
- Repeatability under diverse conditions and products

Directive 94/9/EC (ATEX) and 2004/22/EC (MID)

TECHNICAL SPECIFICATIONS

Brand	MetersControl
Factory Part Number	MC530HC
Material	Aluminum, Cast iron
Inlet	4"
Outlet	4"
Flow Rate	45 - 450 GPM (170 - 1700 LPM)
Measure Unit	US Gallons (Liters optional)
Register	Mechanical, Veeder Root VR7887
Accuracy	±0.12% over a range of 5:1
Repeatability	0.05%
Maximum Operating Pressure	150 Psi (10.3 bar)
Viscosity Range	30 to 1,500,000 SSU (1 to 325,000 cps)
Temperature Range	-22°F to 150°F (-30°C to +70°C)
Origin	Europe