

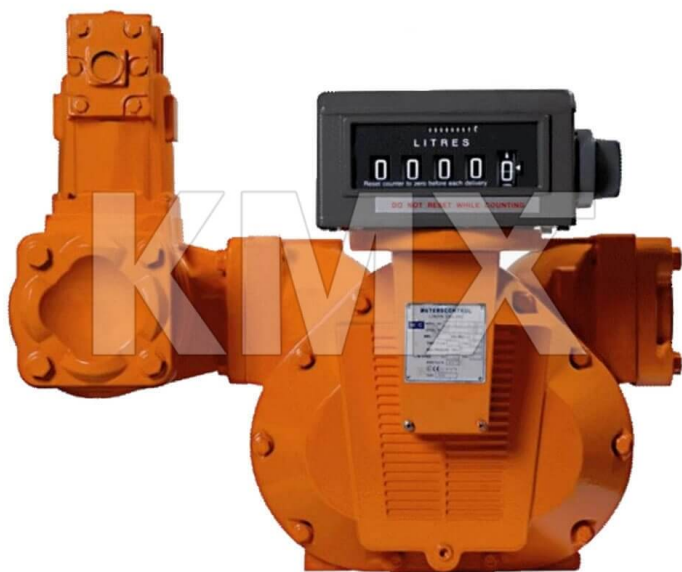
POSITIVE DISPLACEMENT FUEL FLOW METER 4"

DATE
: 04/22/2026 11:46 AM

SKU
: 27824

BRAND
: Meters Control

MODEL
: MC530



* Referential image

** Some features may vary without prior notice. Sale subject to inventory availability

MetersControl Positive Displacement Flow Meter are designed and engineered in Europe and pass through rigorous tests that ensure accuracy, repeatability and long life. MC offers the ideal solution in a variety of applications, in which transfer of petroleum products is implicated and high accuracy is required.

TYPICAL APPLICATIONS: Check of loading / unloading operations of fuel and petrochemical products in fuel bulk plants and/or refineries. On truck tanker for fuel transport and delivery. Heavy duty fuel dispensing system for big vehicles and airplanes.

HIGHLIGHTS:

- Absolute compatibility with all Veeder Root components
- Lack of internal friction (No metal-to-metal contact)
- Reduced number of parts
- Self-lubricating
- Low and easy maintenance
- Low drop pressure between parts
- Simple and robust design
- Bi-directional liquid flow
- Meets Worldwide Weights and Measures Standards
- Repeatability under diverse conditions and products

Directive 94/9/EC (ATEX) and 2004/22/EC (MID)

TECHNICAL SPECIFICATIONS

Brand	MetersControl
Factory Part Number	MC530
Material	Aluminum, Cast iron
Inlet	4"
Outlet	4"
Flow Rate	35 - 350 GPM (130 - 1300 LPM)
Measure Unit	US Gallons (Liters optional)
Register	Mechanical, Veeder Root VR7887
Accuracy	±0.12% over a range of 5:1
Repeatability	0.05%
Maximum Operating Pressure	150 Psi (10.3 bar)
Viscosity Range	30 to 1,500,000 SSU (1 to 325,000 cps)
Temperature Range	-22°F to 150°F (-30°C to +70°C)
Origin	Europe