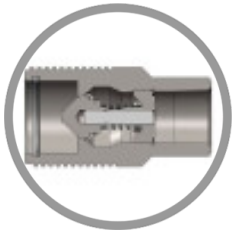


WS-SERIES HIGH PRESSURE WINGSTYLE FEMALE PLUG



* Referential image

** Some features may vary without prior notice. Sale subject to inventory availability

DATE

: 06/16/2026 07:30 AM

SKU

: 25659

BRAND

: DIXON VALVE

MODEL

: WS10F10-SS

Applications:

Used extensively in oil field and off shore oil rig applications

Construction:

Machined components are manufactured using solid 316 stainless steel bar stock.

Stainless steel retaining rings and springs maximize corrosion resistance and extend service life.

Steel componentry is plated using ROHS Compliant Zinc Nickel for superior corrosion resistance.

316 stainless steel nipple connection- threads are coated to prevent galling during connection/disconnection.

Nitrile (Buna-N) seals are standard, providing a temperature range of -40°F to +250°F (-40°C to +121°C)

PTFE anti-extrusion ring protects main coupling O-Ring from dynamic impulse pressure damage.

Main valve seal is 'housed' to improve seal integrity during pressurized connection/disconnection.

Compatibility & Interchange Data:

Snap-Tite 75-Series, Hydraulics Inc. Series- 5TV, DNP VFF-HD

Stucchi VOF, Faster OGV, Eaton FD85, Holmbury LC

Safety notes:

WARNING: Cancer and Reproductive Harm- www.P65Warnings.ca.gov

TECHNICAL SPECIFICATIONS

Body Size	1-1/4"
Burst Pressure	15000 PSI (1000 bar)
Factory Part Number	WS10F10-SS
Length	5.38" (136.7mm)
Material	316 Stainless Steel
Maximum OD	2.63" (66.8mm)
Maximum Operating Pressure	3000 PSI (200 bar)
Temperature Range	-40°F to +250°F (-40°C to +121°C)
Thread	Female NPTF
Thread Size	1-1/4" - 11-1/2