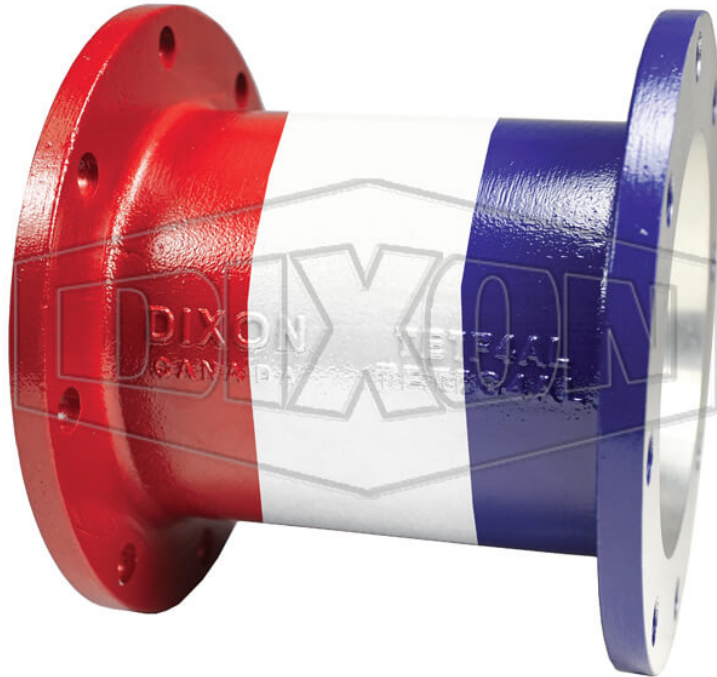


TTMA FLANGE EXTENSION



DATE
: 05/12/2026 10:24 AM

SKU
: 27662

BRAND
: DIXON VALVE

MODEL
: TETF4AL-R/W/B

Applications:

Used to connect an API coupler to a loading arm

Features:

Adds a 6" space to allow for clearance between the loading arm and the tank truck

Color coded for product identification

Other colors available upon request. Consult Dixon® for more details.

Safety notes:

WARNING: Cancer and Reproductive Harm- www.P65Warnings.ca.gov

TECHNICAL SPECIFICATIONS

Color	Red, white, and blue
Description	TTMA flange extension; color-coded combination red, white, and blue
Material	Aluminum, powder coated aluminum
Factory Part Number	TETF4AL-R/W/B
Size	4"

* Referential image

** Some features may vary without prior notice. Sale subject to inventory availability