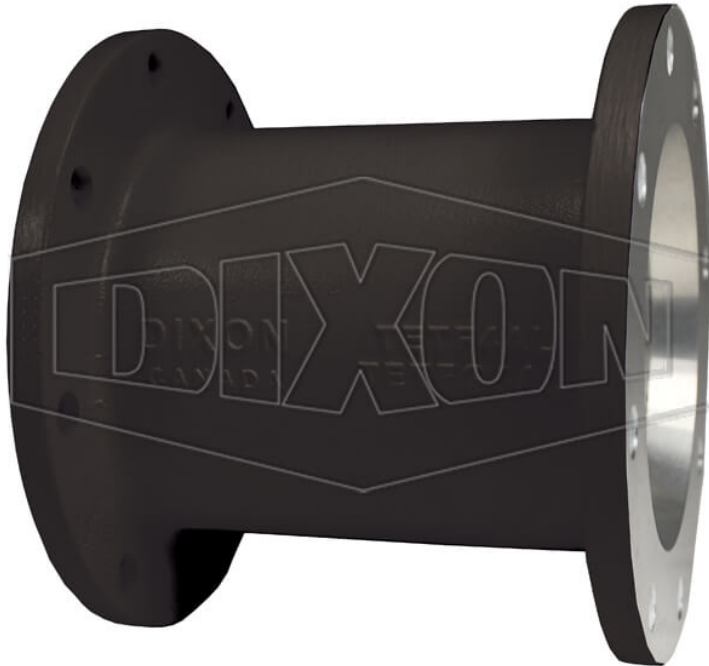


## TTMA FLANGE EXTENSION



\* Referential image

\*\* Some features may vary without prior notice. Sale subject to inventory availability

DATE  
: 05/12/2026 10:22 AM

SKU  
: 27657

BRAND  
: DIXON VALVE

MODEL  
: TETF4AL-BLK

**Applications:**

Used to connect an API coupler to a loading arm

**Features:**

Adds a 6" space to allow for clearance between the loading arm and the tank truck

Color coded for product identification

Other colors available upon request. Consult Dixon® for more details.

**Safety notes:**

WARNING: Cancer and Reproductive Harm- [www.P65Warnings.ca.gov](http://www.P65Warnings.ca.gov)

### TECHNICAL SPECIFICATIONS

<b>Color</b>	Black
<b>Description</b>	TTMA flange extension; color-coded black
<b>Material</b>	Aluminum, powder coated aluminum
<b>Factory Part Number</b>	TETF4AL-BLK
<b>Size</b>	4"
<b>Weight Lb</b>	0.3500