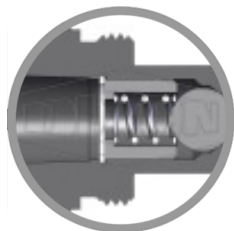


## DQC T-SERIES FEMALE NPTF BALL PLUG



\* Referential image

\*\* Some features may vary without prior notice. Sale subject to inventory availability

DATE  
: 05/24/2026 02:15 AM

SKU  
: 20194

BRAND  
: DIXON VALVE

MODEL  
: T2F2

### Applications:

Designed for high pressure applications including hydraulic rams and pumps where low flow and pressures up to 10,000 PSI are encountered.

Hydraulic tools, jacks, hand pumps, fire rescue tools, crimping, bolting, and power units

### Construction:

Steel nipples are machined using solid high strength steel bar stock.

Chrome steel ball valve is mechanically seated to improve low pressure sealing performance.

Steel componentry is plated using ROHS Compliant Trivalent Chrome.

Polyurethane seals

### Available Options:

Contact Dixon for all available option adders

Standard seal options include: Nitrile O-ring with TPC-ET back-up ring

Kalrez® seal options include: 4079, 6375 and 7075

Valve options include: Unvalved and 316 stainless steel

Oxy-clean treatment is available

### Compatibility & Interchange Data:

High Pressure Screw-Together Interchange

Parker 3000-Series

Enerpac C604

Interchangeable to ISO 14540

### Safety notes:

WARNING: Cancer and Reproductive Harm- [www.P65Warnings.ca.gov](http://www.P65Warnings.ca.gov)

## TECHNICAL SPECIFICATIONS

<b>Body Size</b>	1/4"
<b>Burst Pressure</b>	34300 PSI (2350 bar)
<b>Factory Part Number</b>	T2F2
<b>Hex</b>	1-1/16"
<b>Length</b>	1.29" (32.9mm)
<b>Material</b>	Steel
<b>Maximum OD</b>	1.07" (27.2mm)
<b>Maximum Operating Pressure</b>	10000 PSI (700 bar)
<b>Temperature Range</b>	-40°F to +250°F (-40°C to +128°C)
<b>Thread</b>	Female NPTF
<b>Thread Size</b>	1/4"-18
<b>Weight Lb</b>	0.1900