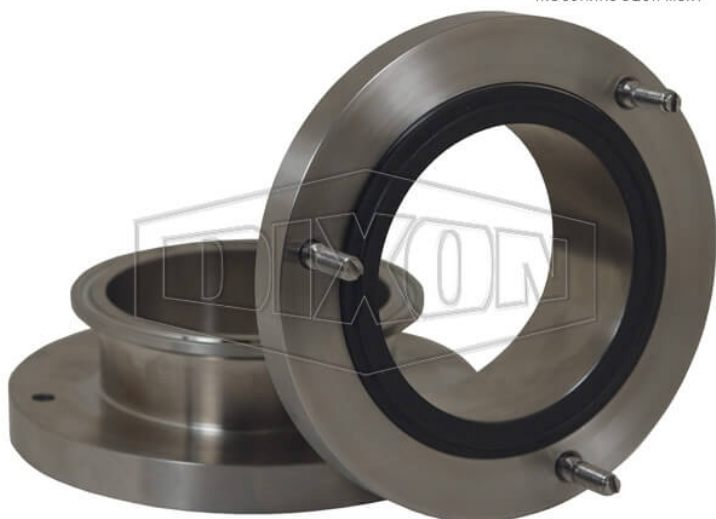


SANITARY BREAKAWAY CLAMP END



* Referential image

** Some features may vary without prior notice. Sale subject to inventory availability

DATE
: 04/17/2026 10:29 AM

SKU
: 18931

BRAND
: DIXON VALVE

MODEL
: SBC-E200CC13

Applications:
Minimizes spillage and damage associated with pull away and drive away incidents

Use:
Designed to be installed between a fixed point and a hose

Features:
13kN break load bolts standard, other break loads available
Coupling breaks away with an excessive load

Construction:
316 stainless steel polished to standard

TECHNICAL SPECIFICATIONS

Factory Part Number	SBC-E200CC13
Material	316 Stainless Steel
Seat	EPDM
Size	2"
Weight Lb	2.9000
Working Pressure	350 PSI at 70°F (21°C)