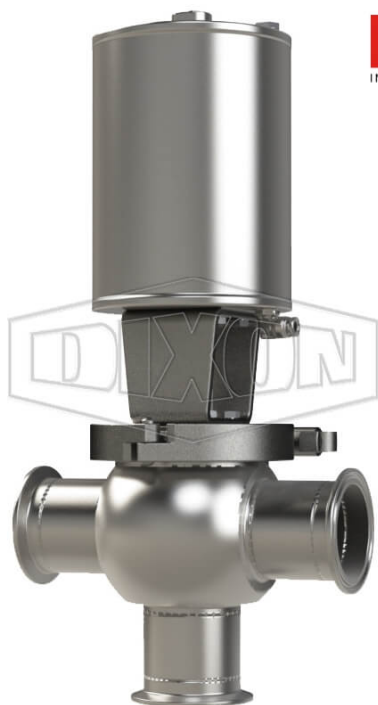


SSV SERIES SINGLE SEAT VALVE, SHUT-OFF T BODY, CLAMP, SPRING RETURN ACTUATOR (AIR-TO-RAISE)



DATE
: 05/10/2026 04:12 PM

SKU
: 18698

BRAND
: DIXON VALVE

MODEL
: S02A40C2EV

TECHNICAL SPECIFICATIONS

Actuator	Pneumatic style: spring return (air-to-lower)
Connection Type	Clamp
Description	Shut-Off T Body Clamp
Elastomer	FKM
Material	316L Stainless Steel
Factory Part Number	S02A40C2EV
Size	4"
Stem Seal Type	FKM O-Ring
Weight Lb	41.1200

* Referential image
** Some features may vary without prior notice. Sale subject to inventory availability