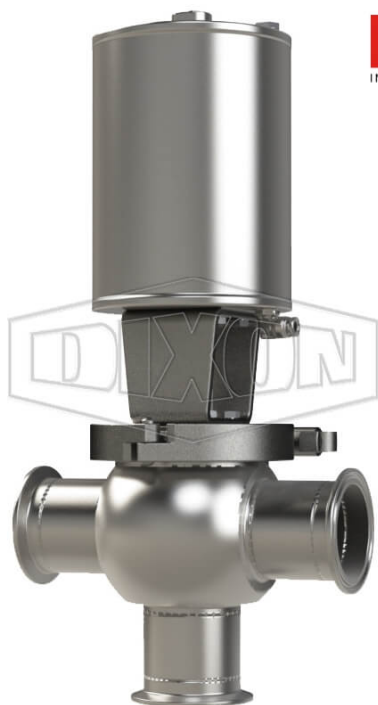


SSV SERIES SINGLE SEAT VALVE, SHUT-OFF T BODY, CLAMP, DOUBLE ACTING ACTUATOR (AIR-TO-AIR)



DATE
: 05/10/2026 02:20 PM

SKU
: 18678

BRAND
: DIXON VALVE

MODEL
: S02A30C3EV

TECHNICAL SPECIFICATIONS

Actuator	Pneumatic style: double acting (air-to-air)
Connection Type	Clamp
Description	Shut-Off T Body Clamp
Elastomer	FKM
Material	316L Stainless Steel
Factory Part Number	S02A30C3EV
Size	3"
Stem Seal Type	FKM O-Ring
Weight Lb	30.4000

* Referential image
** Some features may vary without prior notice. Sale subject to inventory availability