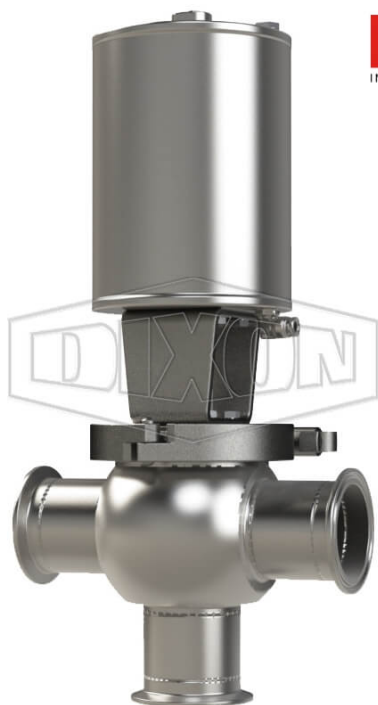


SSV SERIES SINGLE SEAT VALVE, SHUT-OFF T BODY, CLAMP, SPRING RETURN ACTUATOR (AIR-TO-RAISE)



DATE
: 05/10/2026 03:11 PM

SKU
: 18601

BRAND
: DIXON VALVE

MODEL
: S02A15C2EE

TECHNICAL SPECIFICATIONS

Actuator	Pneumatic style: spring return (air-to-lower)
Connection Type	Clamp
Description	Shut-Off T Body Clamp
Elastomer	EPDM
Material	316L Stainless Steel
Factory Part Number	S02A15C2EE
Size	1-1/2"
Stem Seal Type	EPDM O-Ring
Weight Lb	14.0000

* Referential image
** Some features may vary without prior notice. Sale subject to inventory availability