

DIX-LOCK® N-SERIES BOWES INTERCHANGE FEMALE THREADED PLUG



DATE
: 05/22/2026 08:31 PM

SKU
: 25087

BRAND
: DIXON VALVE

MODEL
: N4F8-B

Specifications:

Rated pressure for connected Brass Coupler & Brass Plug: 300 PSI (20 Bar)
Maximum Working and 8,200 PSI (865 Bar) Burst
Conforms to MIL-C-3486 and A-A-50431A standards

Construction:

Machined components are manufactured using solid bar stock.
Stainless steel retaining ring and spring maximize corrosion resistance and extend service life.
Coupling sleeve constructed of cast zinc steel

Available Options:

316 stainless steel available in some versions upon request, contact Dixon

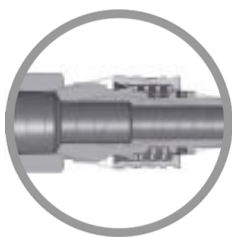
Compatibility & Interchange Data:

Bowes Interchange Bayonet Style
Interchangeable with Bowes 51000-Series, National Series 'B', MacDonald Quick-Action, Campbell Single-Lock

Safety notes:

It is important to be safe when installing quick disconnect couplings into a pneumatic circuit. Never install a pneumatic coupling directly into an air tool, use a piece of hose that is at least 18" long, between the tool and the coupling, to prevent damage to the coupling. To protect the operator, safety devices, such as a safety check valve and safety cable should be installed in case there is a hose or coupling failure.

WARNING: Cancer and Reproductive Harm- www.P65Warnings.ca.gov



* Referential image

** Some features may vary without prior notice. Sale subject to inventory availability

TECHNICAL SPECIFICATIONS

| | |
|----------------------------|-----------------------------------|
| Body Size | 1/2" |
| Factory Part Number | N4F8-B |
| Hex | 1-1/2" |
| Length | 3.59" (91.2mm) |
| Material | Brass |
| Maximum OD | 1.79" (45.3mm) |
| Pressure Rating | See Product Details |
| Temperature Range | -40°F to +250°F (-40°C to +121°C) |
| Thread | NPTF |
| Thread Size | 1" |
| Weight Lb | 0.7700 |