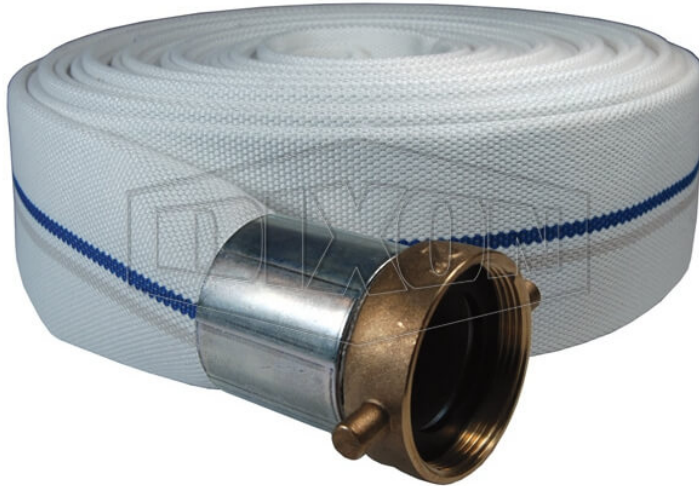


**SYNTHETIC SINGLE JACKET
MILL HOSE**



DATE
: 06/10/2026 05:13 AM

SKU
: 16365

BRAND
: DIXON VALVE

MODEL
: M25-25GAX

Applications:
Ideal for open end discharge applications.

Construction:
Outer: White, Single Jacket, all synthetic
Tube: Black, natural rubber liner
Coupled with Type C coupler x hose shank and Type E adapter x hose shank
Global Aluminum Cam & Groove couplings, crimped.

Available Options:
Consult Dixon for pricing and availability of additional lengths and other configurations.

Safety notes:
Not intended for fire fighting service.
WARNING: Cancer and Reproductive Harm- www.P65Warnings.ca.gov

TECHNICAL SPECIFICATIONS

Bowl Size	2-11/16"
Coupling Type	Cam & Groove
Hose Size	2-1/2"
Color	White
Pressure Rating	250 PSI
Working Pressure	112 PSI
Weight Lb	9.9000
Factory Part Number	M25-25GAX

* Referential image
** Some features may vary without prior notice. Sale subject to inventory availability

TECHNICAL SPECIFICATIONS