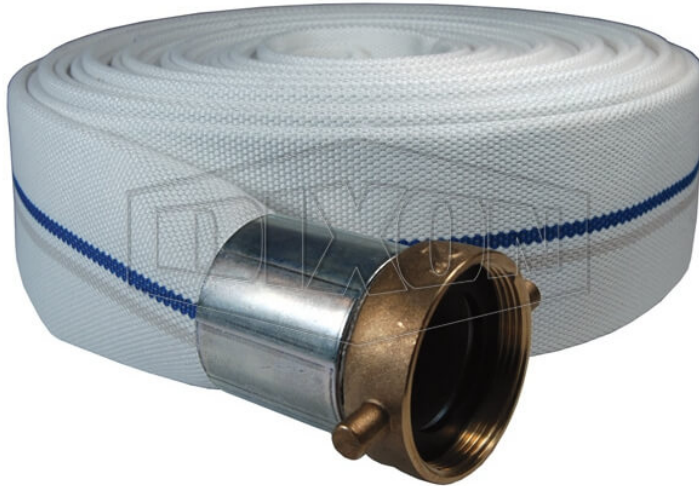


**SYNTHETIC SINGLE JACKET  
MILL HOSE**



\* Referential image

\*\* Some features may vary without prior notice. Sale subject to inventory availability

DATE  
: 06/10/2026 03:36 AM

SKU  
: 16354

BRAND  
: DIXON VALVE

MODEL  
: M15-25KAS

Applications:  
Ideal for open end discharge applications.

Construction:  
Outer: White, Single Jacket, all synthetic  
Tube: Black, natural rubber liner  
Coupled with female and male King Short Shank Suction Couplings, Crimped.

Couplings have aluminum shanks and brass pin lug swivel nuts.

Safety notes:  
Not intended for fire fighting service.  
WARNING: Cancer and Reproductive Harm- [www.P65Warnings.ca.gov](http://www.P65Warnings.ca.gov)

**TECHNICAL SPECIFICATIONS**

<b>Bowl Size</b>	1-11/16"
<b>Coupling Type</b>	Short Shank Suction, NPSH
<b>Hose Size</b>	1-1/2"
<b>Color</b>	White
<b>Pressure Rating</b>	250 PSI
<b>Working Pressure</b>	75 PSI
<b>Weight Lb</b>	6.3200
<b>Factory Part Number</b>	M15-25KAS