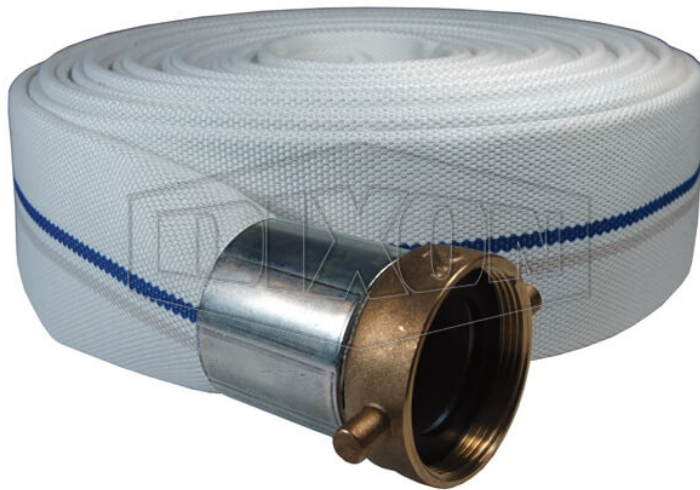


**SYNTHETIC SINGLE JACKET
MILL HOSE**



* Referential image

** Some features may vary without prior notice. Sale subject to inventory availability

DATE
: 06/10/2026 03:51 AM

SKU
: 16353

BRAND
: DIXON VALVE

MODEL
: M15-25KAF

Applications:
Ideal for open end discharge applications.

Construction:
Outer: White, Single Jacket, all synthetic
Tube: Black, natural rubber liner
Coupled with female and male King Short Shank Suction Couplings, Crimped.

Couplings have aluminum shanks and brass pin lug swivel nuts.

Safety notes:
Not intended for fire fighting service.
WARNING: Cancer and Reproductive Harm- www.P65Warnings.ca.gov

TECHNICAL SPECIFICATIONS

Bowl Size	1-11/16"
Coupling Type	Short Shank Suction, NST (NH)
Hose Size	1-1/2"
Color	White
Pressure Rating	250 PSI
Working Pressure	75 PSI
Weight Lb	5.3600
Factory Part Number	M15-25KAF