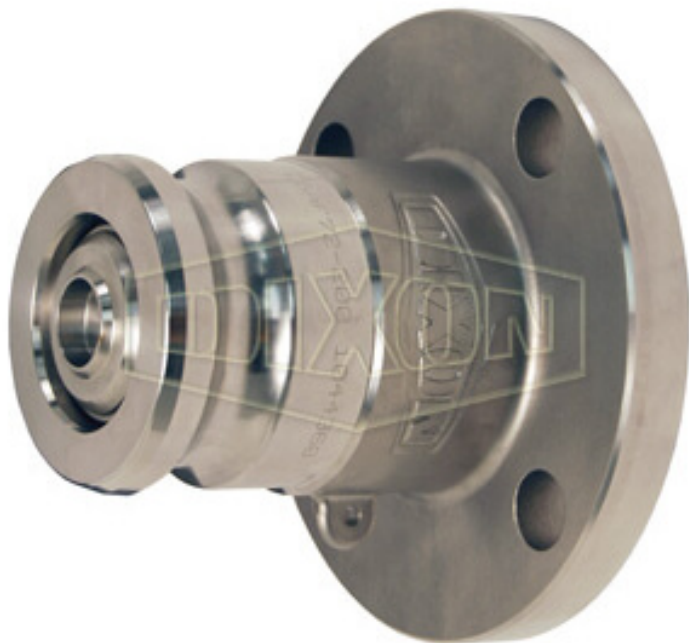


BAYLOC® DRY DISCONNECT ADAPTER X 150# ASA FLANGE



* Referential image

** Some features may vary without prior notice. Sale subject to inventory availability

DATE
: 07/08/2026 02:28 PM

SKU
: 27417

BRAND
: DIXON VALVE

MODEL
: DBAF78-200

Applications:

Dry disconnects help prevent spillage from normal or accidental disconnects. A spring loaded sealing device is designed to "snap" closed should the valve become disconnected with the poppet open, significantly limiting liquid loss.

Use:

Use with DBC or D2C style couplers

Use with standard cam and groove dust caps sized one size larger than the dry disconnect size

Use Cam & Groove Dust Cap Size: 2-1/2"

Construction:

Stainless steel piston

Stainless steel corrosion resistance is comparable to 304 stainless steel

Compatibility & Interchange Data:

Compatible with most other brands of cam and groove style dry disconnects

Fully interchangeable with Kamvalok (OPW trademark) style fittings

Note:

Contact Dixon™ at 800-355-1991 for chemical compatibility, size, material selection and special configurations.

Safety notes:

For pressure ratings at other temperatures, contact Dixon™.

WARNING: Cancer and Reproductive Harm- www.P65Warnings.ca.gov

TECHNICAL SPECIFICATIONS

Adapter Size	2-1/2"
Description	Cam & Groove Style
Flange Size	2"
Material	Stainless Steel
Maximum Operating Pressure	150 PSI at 70°F(21°C)
Factory Part Number	DBAF78-200
Seal	FKM-GFLT