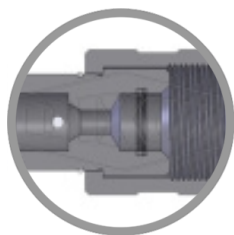


## 20K THREADED COUPLER



\* Referential image

\*\* Some features may vary without prior notice. Sale subject to inventory availability

DATE

: 05/21/2026 02:33 PM

SKU

: 4996

BRAND

: DIXON VALVE

MODEL

: 4TDPF4.5-SS

Construction:

Machined components are manufactured using 316 stainless steel bar stock  
Stainless steel retaining ring to maximize corrosion resistance and extend service life

Seal Components: Nitrile (Buna-N) seals are standard, providing a temperature range of -40°F to 250°F (-40°C to 121°C)

Couplers have a nitrile anti-extrusion ring, providing resistance to o-ring dynamic impulse pressure damage

Compatibility & Interchange Data:

Jet Stream Screw Type

Spir Star CQD Series, DNP CRS Series

Safety notes:

WARNING: Cancer and Reproductive Harm- [www.P65Warnings.ca.gov](http://www.P65Warnings.ca.gov)

### TECHNICAL SPECIFICATIONS

<b>Body Size</b>	1/2"
<b>Factory Part Number</b>	4TDPF4.5-SS
<b>Hex</b>	1-1/8" Flat
<b>Length</b>	2.85"
<b>Material</b>	316 Stainless Steel
<b>Maximum OD</b>	1.88"
<b>Maximum Operating Pressure</b>	20,000 PSI
<b>Temperature Range</b>	-40°F to 250°F (-40°C to 121°C)
<b>Thread</b>	9/16" Female MP

**TECHNICAL SPECIFICATIONS**

**Thread Size**

13/16"-16