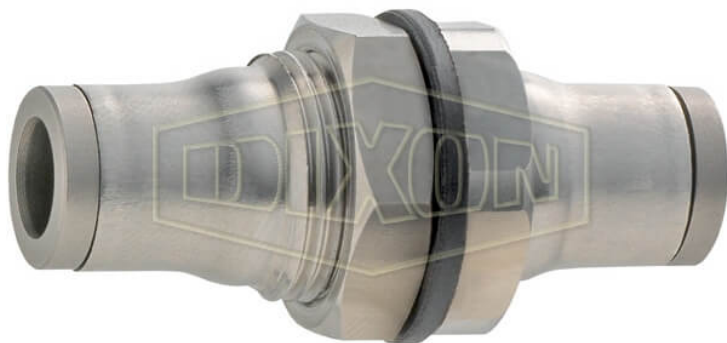


**LEGRIS STAINLESS STEEL  
PUSH-IN BULKHEAD  
CONNECTOR**



\* Referential image

\*\* Some features may vary without prior notice. Sale subject to inventory availability

DATE  
: 05/23/2026 08:45 PM

SKU  
: 3998

BRAND  
: DIXON VALVE

MODEL  
: 38165600

Applications:  
Suitable for many industries such as: chemical, food, packaging and medical

Use:  
Compatible with a range of tubes including: semi-rigid nylon tube, flexible polyurethane tube, low density polyethylene, PTFE tube FEP 140, stainless steel and copper tube (when grooved)

Specifications:  
Materials conforming to FDA and 1934/2004 CE standards

Construction:  
AISI 316 stainless steel body with 316L stainless steel backup washer and 303L stainless steel collet  
Silicone free  
FKM O-ring

Safety notes:  
Maximum circuit pressure depends equally on the type and diameter of the tube used.  
WARNING: Cancer and Reproductive Harm- [www.P65Warnings.ca.gov](http://www.P65Warnings.ca.gov)

## TECHNICAL SPECIFICATIONS

<b>Factory Part Number</b>	38165600
<b>Material</b>	Stainless Steel
<b>Maximum Operating Pressure</b>	290 PSI
<b>Seal</b>	FKM O-ring
<b>Temperature Range</b>	-4°F to 245°F (-20°C to 118°C)
<b>Tube OD</b>	1/4"
<b>Vacuum Capability</b>	28" HG
<b>Weight Lb</b>	0.0600