

## DQC V-SERIES SNAP-TITE H/H INTERCHANGE VALVED MALE COUPLER



DATE  
: 05/24/2026 07:48 PM

SKU  
: 22171

BRAND  
: DIXON VALVE

MODEL  
: 16VM16

### Features:

General purpose hydraulic quick-connect provides superior flow characteristics with built-in reliability

### Construction:

Machined components are manufactured using solid bar stock  
Stainless steel balls, retaining rings and springs maximize corrosion resistance and extend service life.

Steel componentry is plated using ROHS Compliant Trivalent Chrome.

Steel coupler sleeves are hardened to resist deformation and maximize service life.

Tubular 'TV' valves are constructed from steel bar stock and are designed for optimum performance in pneumatic applications.

Nitrile (Buna-N) seals are standard

All couplers incorporate a PTFE anti-extrusion ring to protect the seal components from dynamic impulse damage.

Valve O-rings are retained by a unique seal-groove profile and are field replaceable.

### Available Options:

Contact Dixon for all available option adders

Standard seal options include: FKM, EPDM, Steam-EP, FDA FKM, Mil-Nitrile, Fuel Nitrile and Silicone

Kalrez® seal options include: 4079, 6375 and 7075

Valve options include: Unvalved, tubular, steel, brass and 316 stainless steel

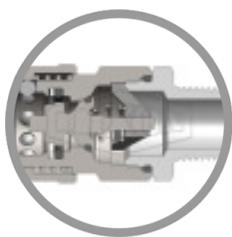
Sleeve options include: Sleeve-lock, Flanged and Silicone-flanged

Oxy-clean treatment is available

### Compatibility & Interchange Data:

Interchangeable to MIL-C-51234

Snap-Tite H and Faster TNV



\* Referential image

\*\* Some features may vary without prior notice. Sale subject to inventory availability

Safety notes:

WARNING: Cancer and Reproductive Harm- [www.P65Warnings.ca.gov](http://www.P65Warnings.ca.gov)

## TECHNICAL SPECIFICATIONS

<b>Body Size</b>	2"
<b>Burst Pressure</b>	4000 PSI (275 bar)
<b>Factory Part Number</b>	16VM16
<b>Hex</b>	3-1/2"
<b>Length</b>	4.54" (115.3mm)
<b>Material</b>	Steel
<b>Maximum OD</b>	3.83" (97.3mm)
<b>Maximum Operating Pressure</b>	1500 PSI (100 bar)
<b>Temperature Range</b>	-40°F to +250°F (-40°C to +121°C)
<b>Thread</b>	Male NPTF
<b>Thread Size</b>	2" - 11-1/2
<b>Weight Lb</b>	6.0100