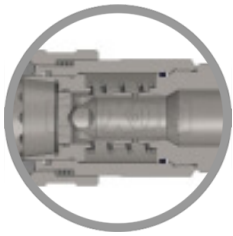


**DQC ST-SERIES SNAP-TITE 71
INTERCHANGE OLD STYLE
FEMALE COUPLER**



* Referential image

** Some features may vary without prior notice. Sale subject to inventory availability

DATE
: 05/24/2026 12:22 AM

SKU
: 1785

BRAND
: DIXON VALVE

MODEL
: 16STF12

Construction:

Machined components are manufactured using solid bar stock
Stainless steel balls, retaining rings and springs maximize corrosion resistance and extend service life.

Steel componentry is plated using ROHS Compliant Trivalent Chrome.
Steel coupler sleeves are hardened to resist deformation and maximize service life.

Available Options:

Contact Dixon for all available option adders

Standard seal options include: FKM, EPDM, Mil-Nitrile and Fuel Nitrile

Kalrez® seal options include: 4079, 6375 and 7075

Oxy-clean treatment is available

Compatibility & Interchange Data:

Interchangeable with Snap-Tite 71-Series

Safety notes:

WARNING: Cancer and Reproductive Harm- www.P65Warnings.ca.gov

TECHNICAL SPECIFICATIONS

Body Size	2"
Burst Pressure	16000 PSI (1100 Bar)
Factory Part Number	16STF12
Hex	3.78"
Length	6.20" (157.5mm)
Material	Steel

TECHNICAL SPECIFICATIONS

Maximum OD	4.47" (113.5mm)
Maximum Operating Pressure	5000 PSI (345 bar)
Temperature Range	-40°F to +250°F (-40°C to +121°C)
Thread	Female NPTF
Thread Size	1-1/2" - 11-1/2"
Weight Lb	9.0700